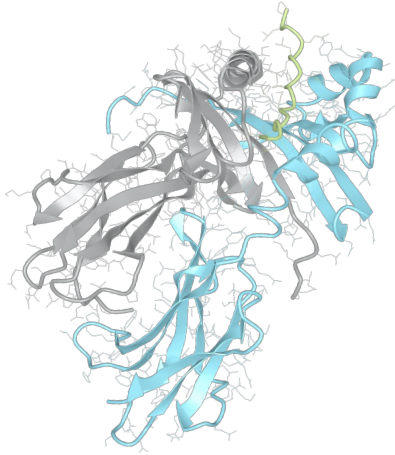


# Product datasheet



## sHLA- DRB1\*15:01bio DRA\*01:01bio

DRB1\*1501, DRB11501, DRB1\*15, DRB15, DR15  
DRA\*0101, DRA0101, DRA\*01, DRA01

|                         |             |
|-------------------------|-------------|
| <b>Serological Name</b> | DR15        |
| <b>Peptide Load</b>     | Endogenous  |
| <b>Modification</b>     | Unmodified  |
| <b>Conjugation</b>      | Biotin      |
| <b>SKU</b>              | DRB11501bio |

### Product Description

|  |   |
|--|---|
| <b>Allele Name</b>                         | <p>DRA*01:01</p> <p>DRB1*15:01</p>  |
| <b>HLA Class</b>                           | HLA Class II  |
| <b>HLA Gene Locus</b>                      | HLA-DR  |
| <b>Alternative Allele Name A Chain</b>     | DRA*0101, DRA0101, DRA*01, DRA01  |
| <b>Alternative Allele Name B Chain</b>     | DRB1*1501, DRB11501, DRB1*15, DRB15, DR15   |
| <b>Description</b>                         | Recombinant, truncated Class II soluble Human Leukocyte Antigen (sHLA), naturally folded and glycosylated, loaded with endogenous peptides. |
| <b>Serological Name</b>                    | DR15  |
| <b>Serological Split</b>                   | DR2   |
| <b>Allele Frequency [World Population]</b> |   |
| <b>A chain</b>                             | -   |
| <b>B chain</b>                             | 7.1%  |

### Associated products

[DRB11501](#)  
[DRB11501pe](#)

## Product Specification

|                             |   |
|-----------------------------|---|
| Product name                | HLA-DRB1*15:01bio   |
| HLA Species                 | Human   |
| Host Cell Line Species      | Mouse   |
| Clone Designation           |   |
| Tail Specification          | ZP  |
| Peptide Load                | Endogenous  |
| Modification                | Unmodified  |
| Conjugation                 | Biotin  |
| Complexity                  | Monomer   |
| Protein Format              | Recombinant, truncated, zipper-stabilized, soluble, non-modified, biotinylated, endogenously loaded |
| Storage Temperature         | 4°C (This product should be stored undiluted)   |
| Form                        | Liquid  |
| Concentration               | 300.0 µg/µl   |
| Formulation                 | PBS/0.02% Sodium Azide  |
| pH                          | 7.4   |
| Purification Method         | Affinity Chromatography   |
| Grade                       | Research Use Only [RUO]   |
| Authentication Verification | Sequence Based Typing   |

## Protein Sequences

|                      |  |
|----------------------|--|
| Alpha Chain Sequence | <p>IKEEHVIIQA EFYLNPDQSG EFMDFDGDGDE IFHVDMAPKE TVWRLEEFGR FASFQAQAL<br/>         ANIAVDKANL EIMTKRSNYT PITNVPPEVT VLTNSPVELR EPNVLICFID KFTPPVVNVV<br/>         WLRNGKPVTT GVSETVFLPR EDHLFRKFHY LPFLPSTEDV YDCRVEHWGL DEPLLKHWEF<br/>         DAPSPLPETT EVDGGGGGAQ LEKELQALEK ENAQLEWELQ ALEKELAQ</p>       |
| Beta Chain Sequence  | <p>GDTRPRFLWQ PKRECHFFNG TERVRFLDRY FYNQEEVRF DSDVGEFRAV TELGRPDAEY<br/>         WNSQKDILEQ ARAAVDTYCR HNYGVVESFT VQRRVQPKVT VYPSKTQPLQ HHNLLVCSVS<br/>         GFYPGSIEVR WFLNGQEEKA GMVSTGLIQN GDWTFQTLVM LETVPRSGEV YTCQVEHPSV<br/>         TSPLTVEWRA RSESAQSKVD GGGGAQLKK KLQALKKKNA QLEKWLQALK KKLAQ</p> |

## Related Products

[DRB11502bio](#)  
[DRB11503bio](#)  
[DRB11101bio](#)  
[DRB11501bio](#)

## Applications

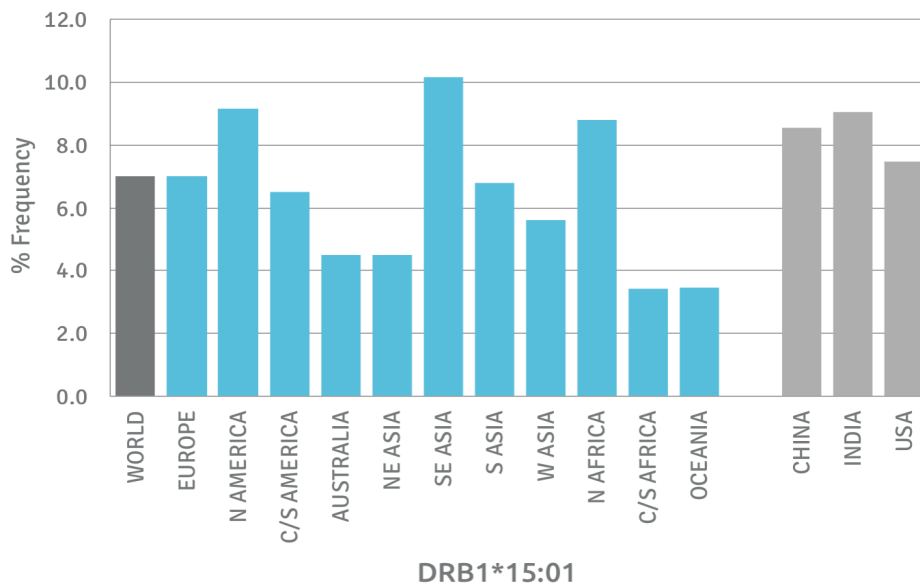
HLA Sandwich ELISAs  
HLA Direct ELISAs  
HLA-Sera Antibody Assays  
HLA Controls in ELISA Assays  
HLA Assay Standards  
HLA Blocking Assays  
HLA Neutralizing Assays  
HLA Competition Assays  
HLA Bead Assays  
HLA Immunization Procedures

## Recommended Antibodies

L243

## Allele Frequency

### Worldwide Allele Frequency



Please note:

ALL PRODUCTS ARE FOR RESEARCH USE ONLY. NOT FOR COMMERCIAL USE IN DIAGNOSTIC PROCEDURES.  
For more information, please visit our Policies section on our website. For licensing inquiries, please contact

[licensing@hlaprotein.com](mailto:licensing@hlaprotein.com)

 HLA Protein  
PURE PROTEIN LLC

| Eplet  | Polymorphic Residues | Antibody Reactivity |
|--------|----------------------|---------------------|
| 4R     | 4R                   | Yes                 |
| 11STS  | 9E10Y11S12T13S       | Yes                 |
| 13SE   | 13S14E               |                     |
| 16H    | 16H                  |                     |
| 25R    | 25R                  | Yes                 |
| 26F    | 26F                  |                     |
| 28D    | 28D                  |                     |
| 31F    | 31F                  |                     |
| 31FH   | 31F32H33N            |                     |
| 32H    | 32H33N               |                     |
| 33N    | 33N                  |                     |
| 37F    | 37F                  |                     |
| 37FV   | 37F38V               |                     |
| 38V    | 38V                  |                     |
| 40F    | 40F41D               |                     |
| 47Y    | 47Y                  |                     |
| 47YR   | 47Y48R               |                     |
| 57A    | 57A58A60H            |                     |
| 58A    | 58A                  |                     |
| 70R    | 70R71R               | Yes                 |
| 70RE   | 70R71R74E            |                     |
| 71R    | 71R                  |                     |
| 73A    | 73A77T               | Yes                 |
| 74E    | 73A74E77T            |                     |
| 77T    | 77T                  | Yes                 |
| 77TY   | 77T78Y               |                     |
| 78Y    | 78Y                  |                     |
| 85V    | 85V                  |                     |
| 85VV   | 85V86V               |                     |
| 86V    | 86V                  |                     |
| 96H    | 96H                  |                     |
| 96HK   | 96H98K120S           | Yes                 |
| 98K    | 98K                  |                     |
| 98KS   | 98K120S              |                     |
| 108P   | 105K108P             |                     |
| 112H   | 112H                 |                     |
| 120S   | 120S                 |                     |
| 140TV  | 140T142V             |                     |
| 149H   | 149H                 |                     |
| 180V   | 180V                 |                     |
| 180VTP | 180V181T183P         |                     |
| 181T   | 181T                 |                     |
| 189R   | 187E189R             |                     |
|        |                      |                     |
|        |                      |                     |
|        |                      |                     |
|        |                      |                     |
|        |                      |                     |
|        |                      |                     |
|        |                      |                     |
|        |                      |                     |
|        |                      |                     |
|        |                      |                     |
|        |                      |                     |